



**MAR ATHANASIOUS COLLEGE OF ENGINEERING,
KOTHAMANGALAM
DEPARTMENT OF CIVIL ENGINEERING
FEEDBACK ANALYSIS 2023-2024**

1. Students Feedback /Exit survey analysis 2023-2024

The feedback targets following different content for different stakeholders. For students, it addressed curriculum and its learning related issues in terms of quality, competence, skills and professionalism. This feedback also considers other issues like delivery of curriculum by teachers. This feedback was collected from students on the following areas.

Q1. The curriculum helps in your level of knowledge in finding solutions to engineering problems

Q2. The curriculum enhances your ability to analyze and investigate complex problems and to design solutions

Q3. The curriculum develops your skill to use modern tools and techniques in engineering activities

Q4. The curriculum strengthen your ability to find engineering solutions for sustainable development considering the impact on society.

Q5. The curriculum promotes the level of ethical attitude and responsibilities in engineering practices

Q6. The curriculum provides proficiency at teamwork.

Q7. The curriculum develops your communication with the engineering community and society

Q8. The curriculum enhances your level of knowledge in principles of engineering and management to manage projects.

Q9. The curriculum enhances your ability to engage in lifelong learning essentially in the context of technological change.

Q10. The curriculum strengthens your ability to identify, understand and optimize civil engineering solutions.

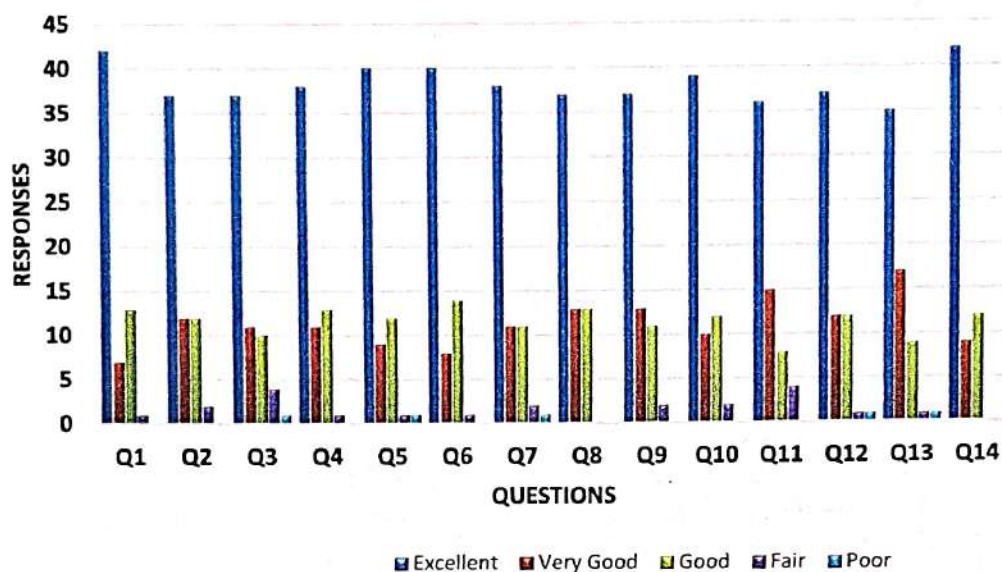
Q11. The curriculum stimulates your out of the box thinking and continuous development attitude towards civil engineering problems

Q12. The adequacy of your course curriculum in addressing social issues

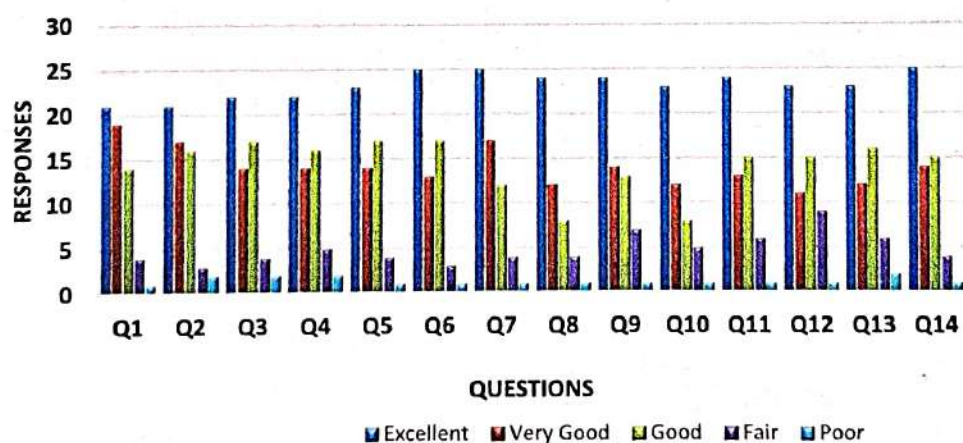
Q13. Curriculum has relevance in real life situations and reflects current trends and applications in the respective disciplines.

Q14. The curriculum offers sufficient electives and provision for value added courses.

EXIT SURVEY BATCH A 2023-2024



EXIT SURVEY BATCH B 2023-2024

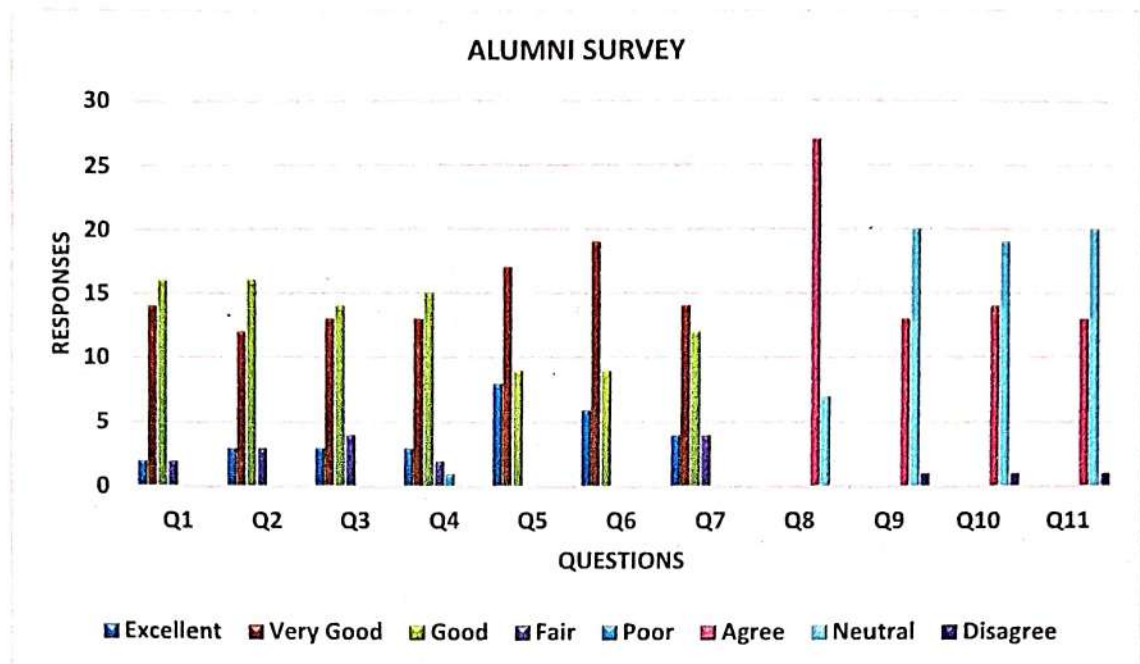


2. Alumni Feedback analysis 2023-24.

The feedback targets following different content for different stakeholders.

For alumni, it aimed for responses on adequateness of courses curriculum, sufficiency of syllabus content in context of current professional standards and curriculum design in context of development of self-directed learning and problem-solving approach. This feedback was collected from alumni on the following areas.

- Q1. After graduating, to what extent do you see yourself equipped in the fundamentals of mathematics, science, and engineering?
- Q2. How well do you think you are in synthesizing data, analyzing them, and solving the core problems in your area of work
- Q3. Rate your confidence level to take up civil engineering projects, spanning across planning, designing and execution
- Q4. Your adaptability and comfort level during interacting with experts in other fields
- Q5. Rate yourself in ethical values and commitment to society and to sustainable development
- Q6. Your ability to function as an individual, as a team member and to leader a diverse team, and in multidisciplinary projects
- Q7. Adequacy of your course curriculum in addressing the challenges in your profession
- Q8. How much did your education at Mar Athanasius College of Engineering, contribute to your personal growth?
- Q9. The curriculum includes progressive learning and skills for a successful career
- Q10. Experiential learning activities (Internships / Field Visit/ Project/ Assignments/ Seminars/ Others) are appropriate for skill development/Employment/Self Employment
- Q11. The content of the program helps to develop your skill to work in a team and in multidisciplinary environments



3 Employer Feedback analysis 2023-2024

The feedback targets following different content for different stakeholders. For employers, it addressed issues like general communication skills, developing solutions to real life problems, working in a team, creative challenges to challenges, organization skills, learning of new techniques, integration of technology for work as learnt through the curriculum. This feedback was collected from employers on the following areas.

Q1. Graduate's fundamental knowledge in mathematics, science, and engineering.

Q2. Graduate's capacity to analyze and solve engineering problems

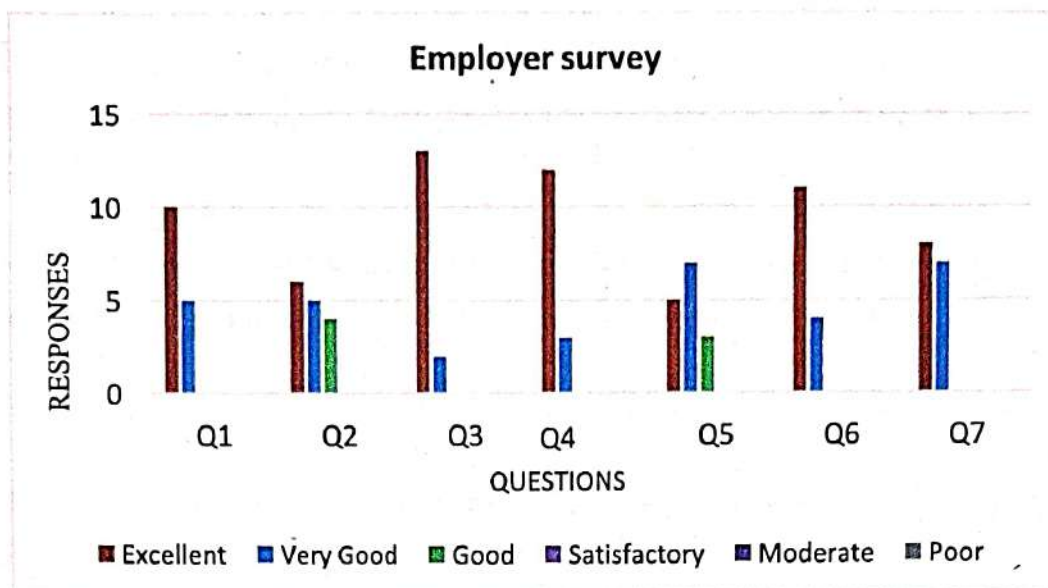
Q3. How well do you rate the graduate as a team member in projects?

Q4. The overall interest of graduate to learning new concepts, techniques and tools

Q5. Capacity of graduate to design new projects and to execute construction economically

Q6. Rate our graduate's ethical values and commitment to society

Q7. Rate the overall performance of our graduate



3 Faculty Feedback analysis 2023-2024

The feedback targets following different content for different stakeholders.

For teachers, the feedback addressed issues like suitability the course and its need base, outcomes of the curriculum, relationship with course content and corresponding reference material, availability of reference materials in terms with curriculum, evaluation methods and curriculum delivery, etc. This feedback was collected from teachers on the following areas.

Q1. How would you rate the content of the course in enriching technical knowledge and solving various engineering problems?

Q2. How would you recommend this course in familiarizing students with modern engineering tools?

Q3. How well the course content creates awareness in professional ethics and emphasize the sustainable development of the society?

Q4. How would you rate the course content in providing proficiency at team work to assured sufficient managerial skills?

Q5. How would you recommend the course in developing effective communication and documentation skills

Q6. The course equips the students in lifelong learning in the context of technological development

Q7. How would you rate the contents of this course in enabling the students to analyse Civil Engineering problems based on the knowledge in Mathematics, Sciences and fundamentals of Engineering

Q8. How would you rate the effectiveness of this course in developing Proficiency in Civil Engineering problem identification, formulation, analysis, design and execution.

Q9. How well the course contents stimulates the out of the box thinking capacity of students.

Q10. How well this course helps in supporting the society with solutions to various Civil Engineering problems.

Q11. Course objectives were clear

Q12. Course content was organized and well planned

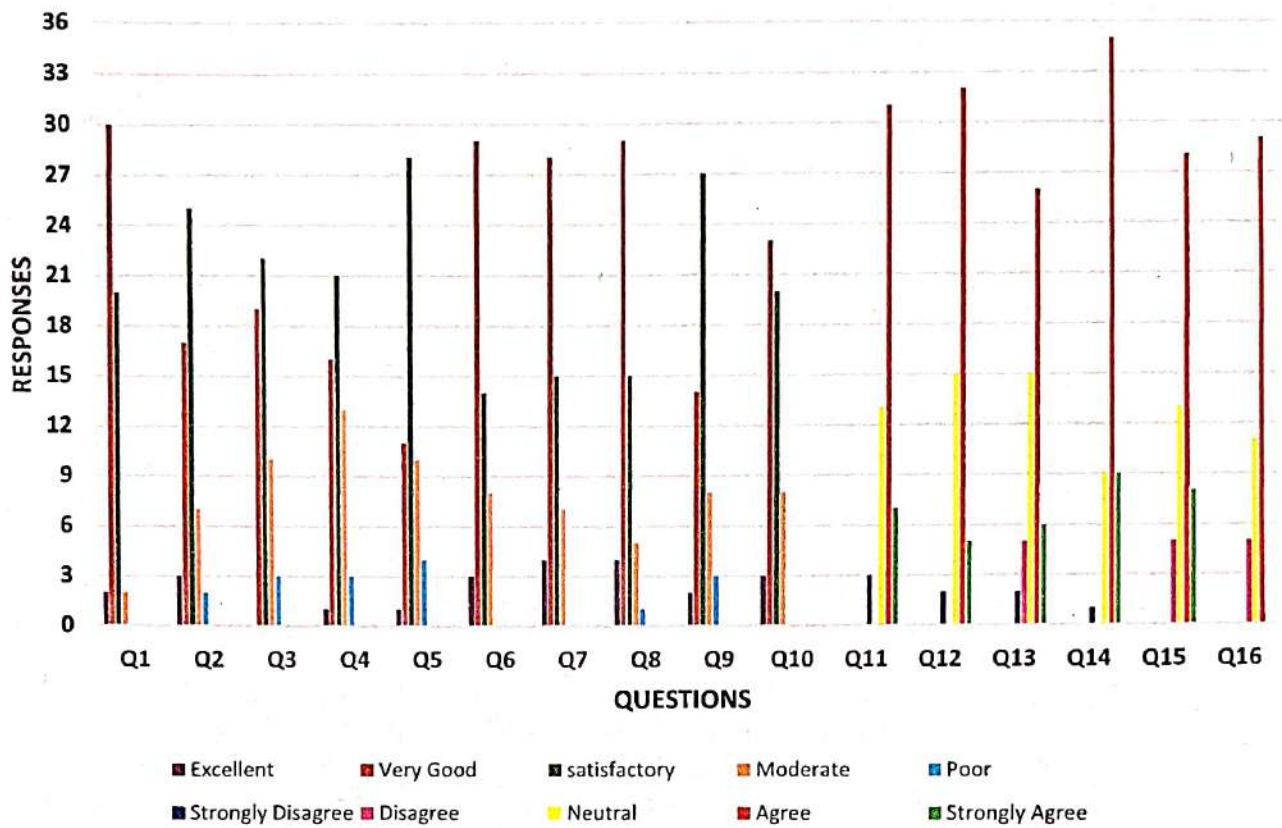
Q13. Course workload was appropriate

Q14. Availability of e learning resources/ reference books

Q15. Scope of experiment-based learning for the course

Q16. Provides essential life skills or employability

Faculty Feedback



Dr. Elson John
Dr. ELSON JOHN
 Professor & Head
 Department of Civil Engineering
 M.A. College of Engineering
 Kothamangalam - 686 666



DEPARTMENT OF MECHANICAL ENGINEERING
MAR ATHANASIUS COLLEGE OF ENGINEERING, KOTHAMANGALAM

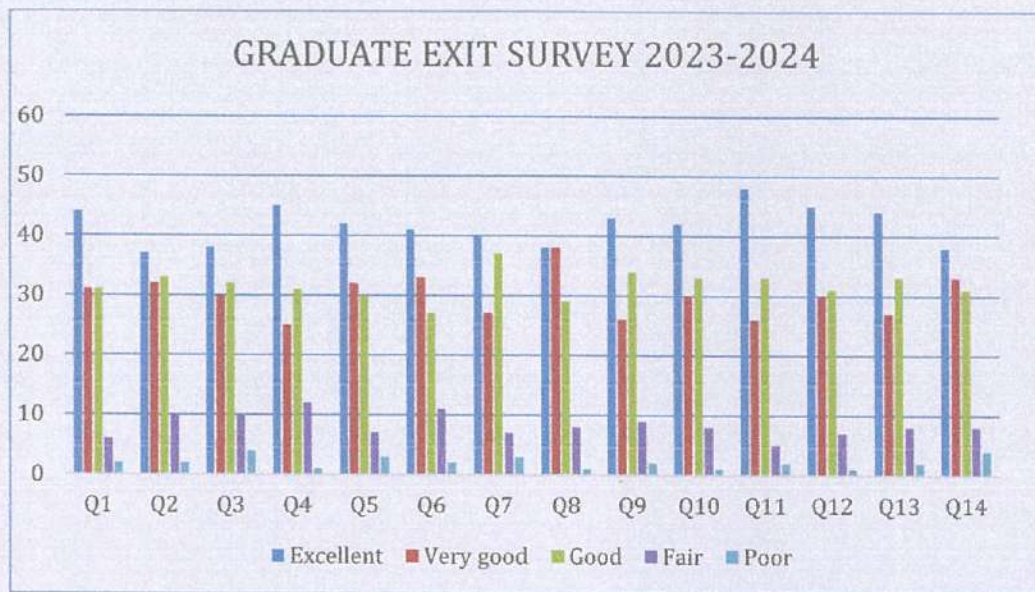
FEEDBACK ANALYSIS REPORT 2023-2024

The department takes feedback through a well-structured feedback system, where the stakeholders give feedback on syllabi and curriculum. The main stakeholders are students, teachers, employers and alumni.

GRADUATE SURVEY- UG

- Q1: The curriculum helps in your level of knowledge in finding solutions to engineering problems.
- Q2: The curriculum enhances your ability to analyze and investigate complex problems and to find solutions.
- Q3: The curriculum develops your skills to use modern software tools and techniques in engineering activities.
- Q4: The curriculum strengthens your ability to find engineering solutions for sustainable development considering the impact on society.
- Q5: The curriculum promotes the level of ethical attitude and responsibilities in engineering practices.
- Q6: The curriculum provides proficiency in teamwork.
- Q7: The curriculum develops your communication with the engineering community and society
- Q8: The curriculum enhances your level of knowledge in principles of engineering and management to manage projects.
- Q9: The curriculum enhances your ability to engage in lifelong learning essentially in the context of technological change.
- Q10 The curriculum strengthens your ability to develop and design innovative power systems incorporating state of-the-art technologies.
- Q11 The curriculum aids your ability to apply control system principles and power electronics techniques to support the industry and society.
- Q12 The course curriculum enhances your level of knowledge in electronic and communication systems to find the optimal solution to industrial problems.
- Q13 The curriculum has relevance in real life situations and reflects current trends and applications in the respective disciplines.
- Q14 The curriculum offers sufficient electives and provision for value added courses.



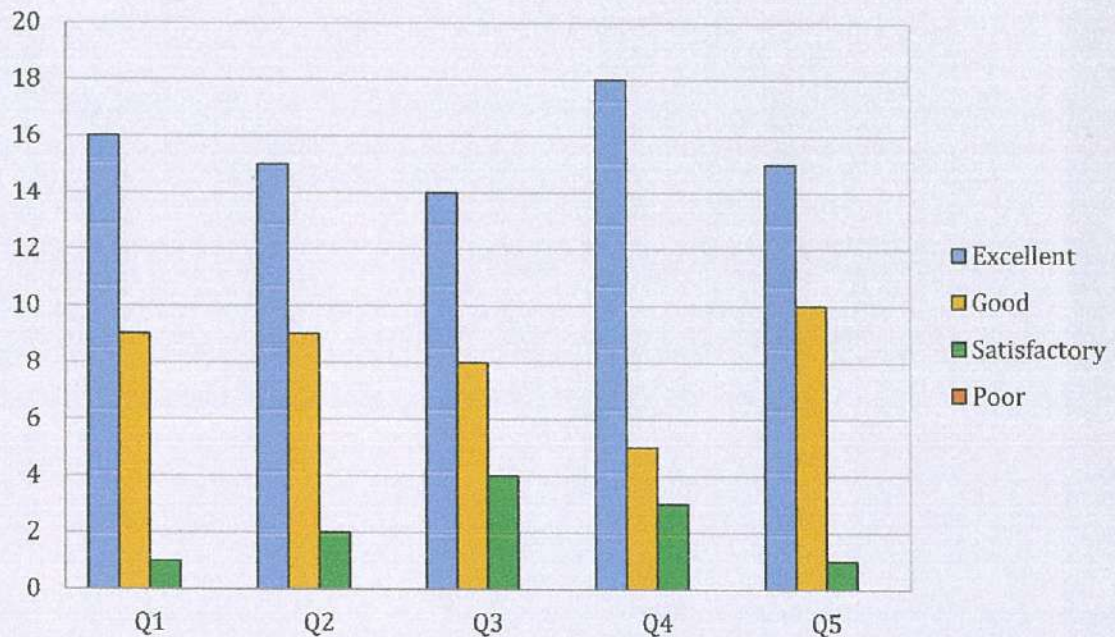


ALUMNI SURVEY

- Q1 Analyze problems and design effective solutions individually and in teams.
- Q2 Observe real world situations and identify complex engineering problems which can be solved by applying the knowledge acquired.
- Q3 Equip you with adequate knowledge of modern tools and inculcate a learning attitude
- Q4 Interpret social needs and manage such projects providing ethical and sustainable solutions
- Q5 Effectively communicate complex engineering activities through documents as well as orally



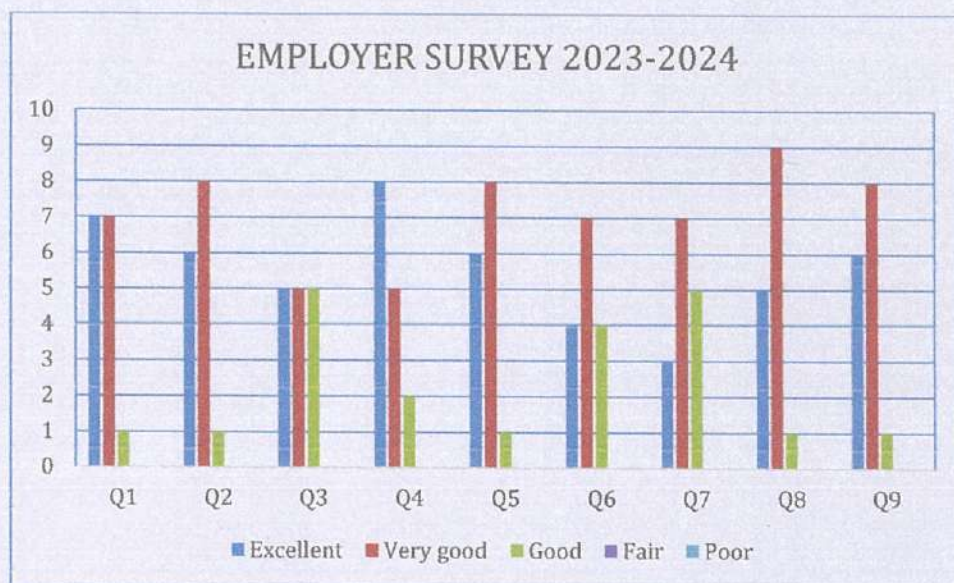
ALUMNI SURVEY 2023-2034



EMPLOYER SURVEY

- Q1. Our graduate's capacity on applying fundamentals of Engineering knowledge in your organization.
- Q2. The ability of our graduates to analyze and investigate complex problems and to work out multiple alternative solutions.
- Q3. The competency of our graduates in using modern tools and state of the art technology appropriately.
- Q4. The level of ethical attitude, personal integrity, and response to societal issues.
- Q5. Our graduate's leadership skills and team building capability.
- Q6. The communication skills, attitude, behavior, and emotional intelligence of our graduates.
- Q7. Their skills in various aspects of project management.
- Q8. Their aptitude for self-learning and life-long learning to meet the ever-changing demands of the profession.
- Q9. Their rate of overall performance of our graduates in your organization.





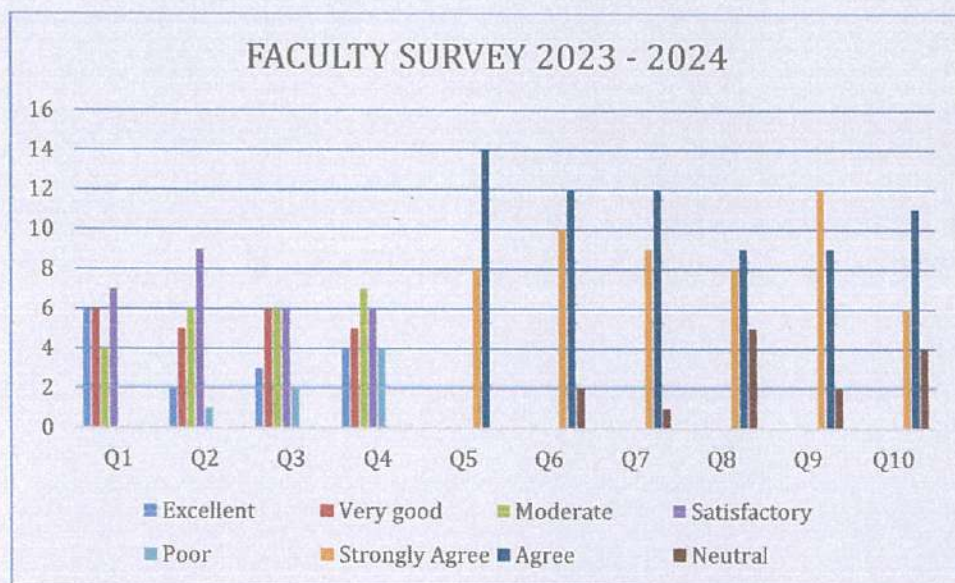
FACULTY SURVEY

- Q1. How would you rate the content of the course in enriching technical knowledge and solving various engineering problems?
- Q2. How would you recommend this course in familiarizing students with modern engineering tools?
- Q3. How well the course content creates awareness of professional ethics and emphasizes the sustainable development of society?
- Q4. How would you rate the course content in providing proficiency in teamwork to assure sufficient managerial skills?
- Q5. How would you recommend the course in developing effective communication and documentation skills.
- Q6. The course equips the students with lifelong learning in the context of technological development.
- Q7. Curriculum structure: Course objectives were clear
- Q8. Curriculum structure: Course content was organized
- Q9. Curriculum structure: Course workload was appropriate
- Q10. Curriculum structure: Availability of e-learning resources/ reference books



Q11. Curriculum structure: Scope of experiment-based learning for the course

Q12. Curriculum structure: Provides essential life skills for employability





DEPARTMENT OF ELECTRICAL AND ELECTRONICS ENGINEERING
MAR ATHANASIUS COLLEGE OF ENGINEERING, KOTHAMANGALAM

FEEDBACK ANALYSIS REPORT 2023-2024

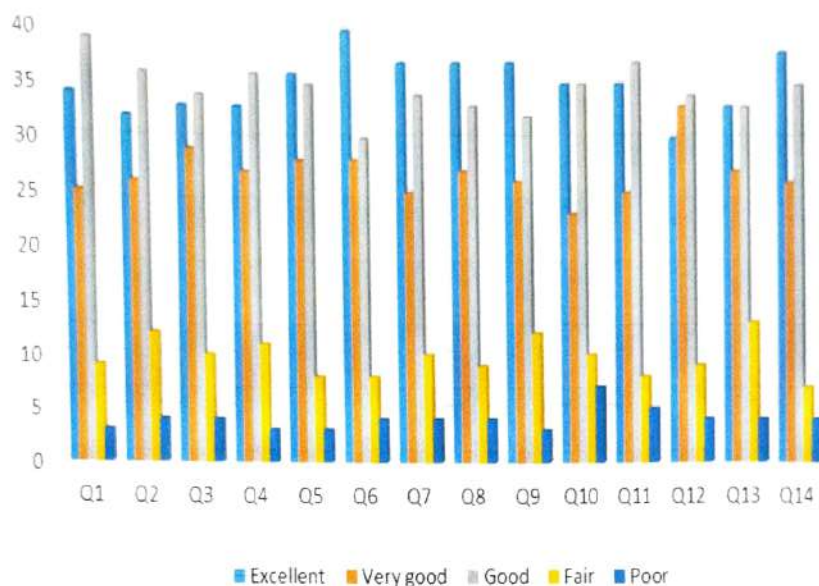
The department takes feedback through a well-structured feedback system, where the stakeholders give feedback on syllabi and curriculum. The main stakeholders are students, teachers, employers and alumni.

GRADUATE SURVEY- UG

- Q1: The curriculum helps in your level of knowledge in finding solutions to engineering problems.
- Q2: The curriculum enhances your ability to analyze and investigate complex problems and to find solutions.
- Q3: The curriculum develops your skill to use modern software tools and techniques in engineering activities.
- Q4: The curriculum strengthens your ability to find engineering solutions for sustainable development considering the impact on society.
- Q5: The curriculum promotes the level of ethical attitude and responsibilities in engineering practices.
- Q6: The curriculum provides proficiency at teamwork.
- Q7: The curriculum develops your communication with the engineering community and society.
- Q8: The curriculum enhances your level of knowledge in principles of engineering and management to manage projects.
- Q9: The curriculum enhances your ability to engage in lifelong learning essentially in the context of technological change.
- Q10: The curriculum strengthens your ability to develop and design innovative power system incorporating state-of-the-art technologies.
- Q11: The curriculum aids your ability to apply control system principles and power electronics technique to support the industry and society.
- Q12: The course curriculum enhances your level of knowledge in electronic and communication system to find the optimal solution of industrial problems.
- Q13: The curriculum has relevance in real life situations and reflects current trends and applications in the respective disciplines.

Q14 The curriculum offers sufficient electives and provision for value added courses.

GRADUATE SURVEY 23-24- UG



ALUMNI SURVEY

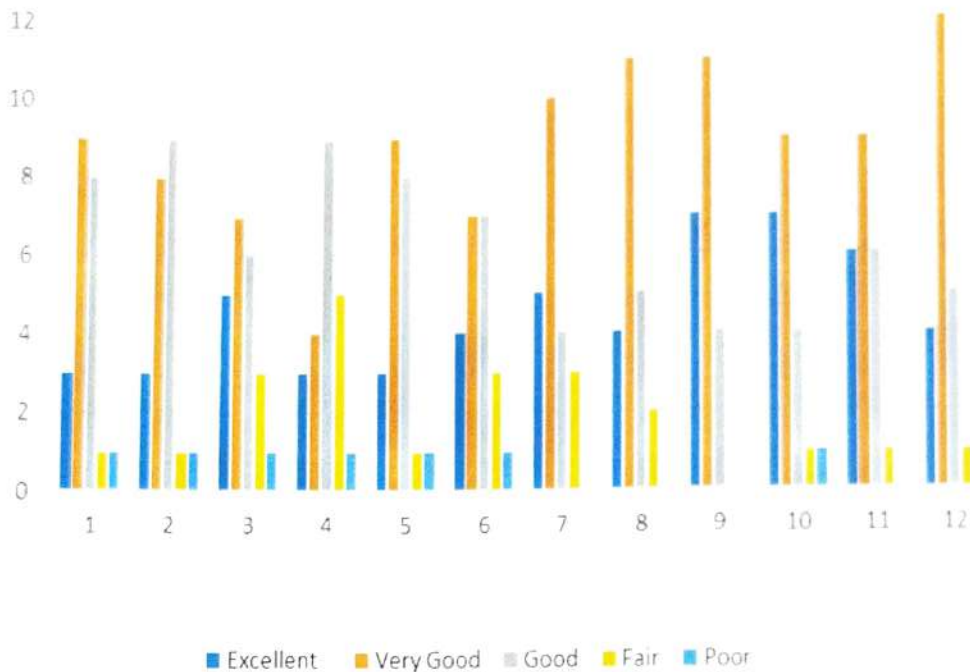
- Q1 Maths, Science and Engineering Skills.
- Q2 Problem formulation and solving Skills.
- Q3 Ability to link theory to real life problems
- Q4 Computer and software Knowledge, Novel scientific and engineering tools
- Q5 Ability to collect, critically analyze and evaluate appropriate data.
- Q6 Novel scientific and engineering tools.
- Q7 Oral Communication.
- Q8 Presentation Skills
- Q9 Ethical attitude.

Q10 Ability to work in teams.

Q11 Ability to face societal problems.

Q12 Ability to cope up with the training period/ initial stage in your employment.

14 ALUMNI SURVEY 23-24



EMPLOYER SURVEY

Q1. Our graduate's capacity on applying fundamentals of Engineering knowledge in your organization.

Q2. The ability of our graduates to analyze and investigate complex problems and to work out multiple alternative solutions.

Q3. The competency of our graduates in using modern tools and state of the art technology appropriately.

Q4. The level of ethical attitude, personal integrity and response to societal issues.

Q5. Our graduate's leadership skills and team building capability.

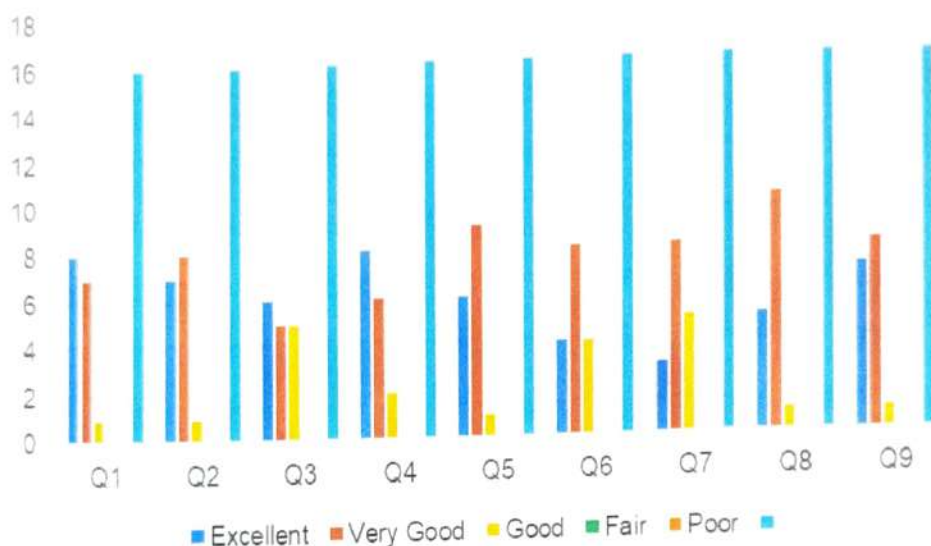
Q6. The communication skill, attitude, behaviour and emotional intelligence of our graduates.

Q7. Their skills in various aspects of project management.

Q8. Their aptitude for self-learning and life-long learning to meet the ever-changing demands of the profession.

Q9. Their rate of overall performance of our graduates in your organization.

EMPLOYER SURVEY 23-24

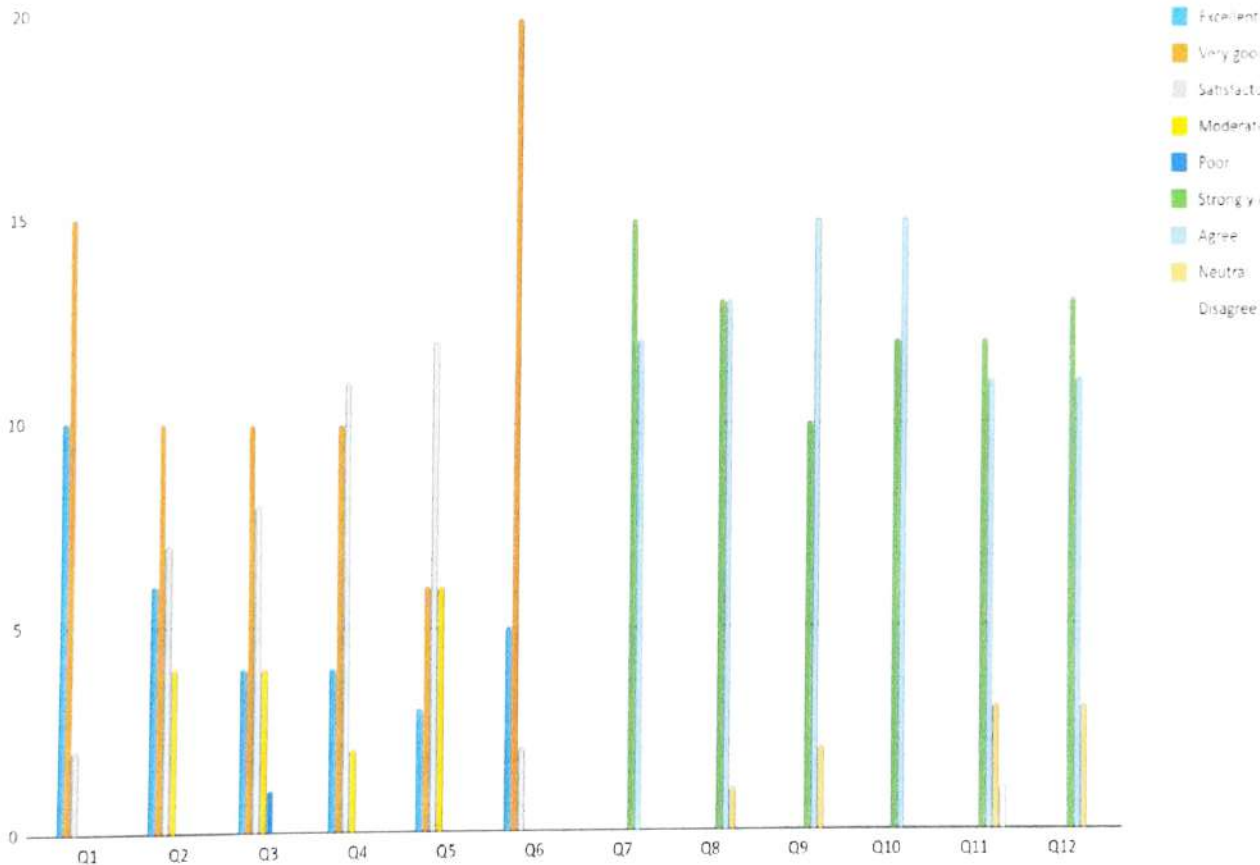


FACULTY ANALYSIS

- Q1. How would you rate the content of the course in enriching technical knowledge and solving various engineering problems ?
- Q2. How would you recommend this course in familiarizing students with modern engineering tools ?
- Q3. How well the course content creates awareness in professional ethics and emphasizes the sustainable development of society ?
- Q4. How would you rate the course content in providing proficiency at team work to assure sufficient managerial skills ?
- Q5. How would you recommend the course in developing effective communication and

documentation skills.

- Q6. The course equips the students in lifelong learning in the context of technological development.
- Q7. Curriculum structure : Course objectives were clear
- Q8. Curriculum structure : Course content was organized
- Q9. Curriculum structure : Course workload was appropriate
- Q10. Curriculum structure : Availability of e learning resources/ reference books
- Q11. Curriculum structure : Scope of experiment based learning for the course
- Q12. Curriculum structure : Provides essential life skills for employability



Beena
HOD (E)

DEPARTMENT OF ELECTRONICS AND COMMUNICATION ENGINEERING
MAR ATHANASIOUS COLLEGE OF ENGINEERING, KOTHAMANGALAM

FEEDBACK ANALYSIS REPORT FOR THE YEAR 2023-2024

Feedback is essential to the ongoing development and success of Mar Athanasius College of Engineering, Kothamangalam, playing a key role in shaping its academic environment. It helps drive improvements in teaching practices and enriches the learning experience for students, contributing to the institution's pursuit of excellence. By actively seeking and utilizing feedback, the college ensures that it stays aligned with evolving educational standards.

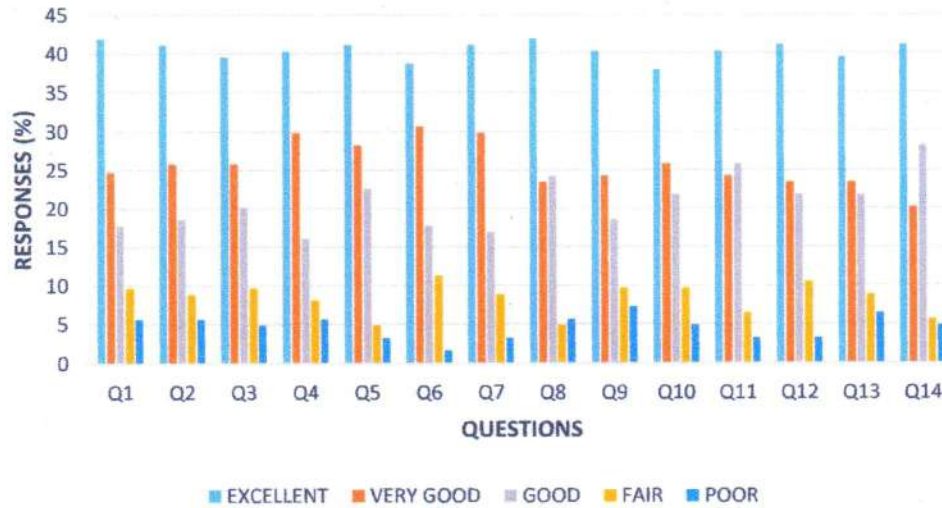
At Mar Athanasius College of Engineering, feedback serves as more than just a tool for evaluation—it is a platform for open dialogue between students, faculty, and administrators. This exchange of ideas creates a collaborative environment that supports academic growth. The institution acknowledges that for feedback to be effective, it must be a two-way process, engaging all participants in meaningful ways.

The strong reputation of the college is closely tied to the feedback it receives from graduates, alumni, faculty, and employers. This four-way interaction forms a mutually beneficial relationship that strengthens the institution's programs. By leveraging the insights provided by various stakeholders, the college continuously adapts and evolves, ensuring its academic offerings remain relevant and effective.

GRADUATE SURVEY

Graduates serve as a testament to the institution's success, applying the knowledge and skills gained at Mar Athanasius College of Engineering in their professional careers. Their feedback offers valuable real-world insights into the effectiveness of the academic programs and how well they were prepared for their chosen fields. These firsthand experiences enable the institution to continuously adapt and enhance its curriculum to align with the changing needs of industries and the expectations of today's workplaces.

GRADUTE SURVEY 2023-2024

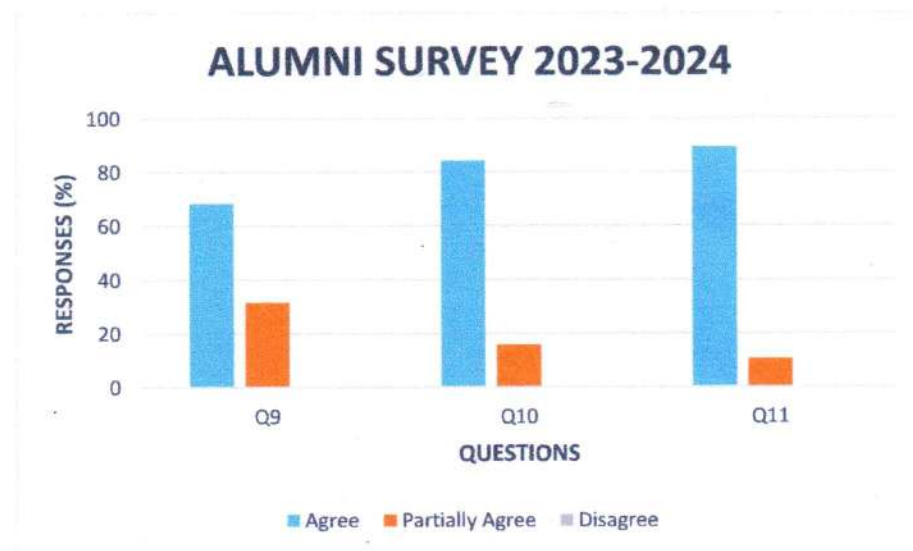


Graduates of the institution express a high level of satisfaction with various aspects, including institutional practices, the curriculum and syllabus, as well as the teaching and learning methods. Survey results indicate a clear and positive response from our students, reflecting their contentment with the educational experience

ALUMNI SURVEY

Alumni, as long-term stakeholders and ambassadors of the institution, provide a distinctive viewpoint on the lasting influence of their education. Their feedback encompasses both personal and professional development, highlighting not only academic accomplishments but also the institution's contribution to character building and nurturing a sense of community. Such insights are crucial for upholding the institution's core values while adapting to the evolving demands of society.

Moreover, the perspectives shared by alumni serve as a guiding light for future improvements and initiatives. By leveraging their experiences and successes, the institution can refine its programs to better align with the needs of current and prospective students. Engaging alumni in ongoing dialogue fosters a collaborative relationship that benefits both the institution and its graduates, creating a vibrant network that supports lifelong learning and growth.

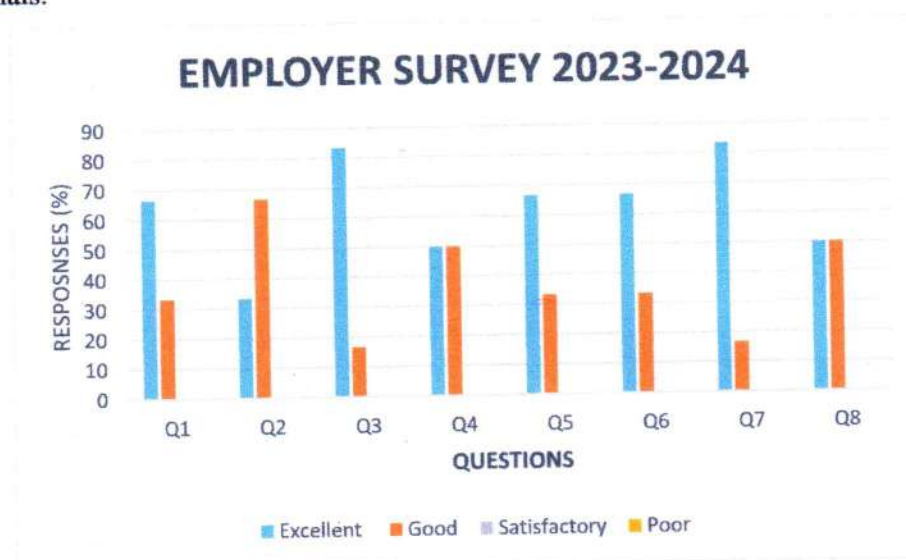


The alumni have recommended implementing technical practices within the institution to help students develop essential skills in their core areas. This approach would also foster a passion for learning among students. Alumni have advocated for necessary measures to enhance the overall technical development of students graduating from the institution. They have expressed satisfaction with the institutional culture and learning methods currently in place.

EMPLOYER SURVEY

Employer feedback serves as an important external benchmark for assessing the institution's success in producing job-ready graduates. Employers provide valuable insights into the practical relevance of the knowledge and skills acquired at Mar Athanasius College of Engineering, facilitating the connection between academia and industry.

This alignment ensures that graduates are effectively prepared to make significant contributions to the workforce, thereby bolstering the institution's reputation as a trusted source of skilled professionals.



S

Employers have indicated that there is a need to enhance socio-interpersonal culture and leadership skills among students to better navigate professional life. They believe that while employees are well-prepared with the current syllabus and teaching methods, strengthening these soft skills will further equip graduates for success in the workplace.

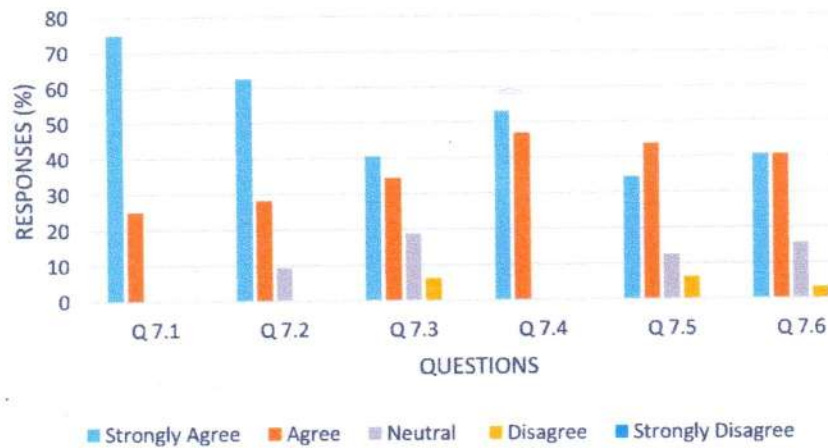
FACULTY SURVEY

Faculty members, as key figures in the delivery of education, are essential to the feedback ecosystem. Their perspectives on the effectiveness of teaching methodologies, curriculum design, and student engagement are crucial for the continuous improvement of the institution. Faculty feedback helps ensure that academic programs remain dynamic, relevant, and in line with the latest developments in their fields, promoting a culture of innovation and academic excellence.

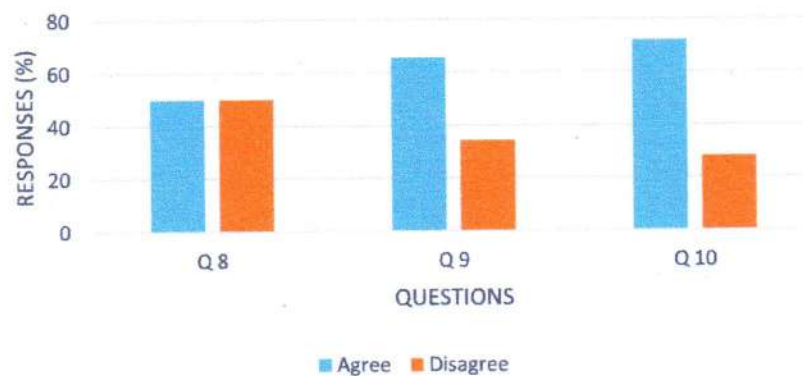
FACULTY FEEDBCK 2023-2024



FACULTY FEEDBCK 2023-2024



FACULTY FEEDBCK 2023-2024



In response to the feedback received, the following recommendations for improvement have been proposed:

1. Expanding the coverage of modern engineering tools.
2. Strengthening activities that emphasize teamwork and managerial skills.
3. Deepening the integration of professional ethics and sustainable development concepts.
4. Offering additional experiential learning opportunities and industry-specific courses.

These recommendations aim to further enhance the effectiveness of the course in addressing the evolving demands of engineering education and better preparing students for successful careers in the field.



Dr. Aji Jeyaraj

Head of the Department
Dept. of Electronics & Communication
Mar Athanasius College of Engineering
Kothamangalam - 686 666

COMPUTER SCIENCE & ENGINEERING DEPARTMENT
FEEDBACK ANALYSIS REPORT
2023-24



MAR ATHANASIOUS COLLEGE OF ENGINEERING, KOTHAMANGALAM
COMPUTER SCIENCE AND ENGINEERING DEPARTMENT
FEEDBACK ANALYSYS 2023-24

Feedback is a tool that can help people evaluate themselves and their work and also how others perceive them. While employees and students need to receive feedback, it's also essential for leaders who believe in growth to ask for an evaluation, to give an example, and be an inspiration for them. In this regard, surveys play an important role in education sector. It helps to improve the quality of education and enhancing the teaching learning process and thereby making an overall development of the society.

We are collecting the feedback from different stakeholders which includes students, alumni, faculty and employers. The feedbacks from different perspectives help to find the gaps in the education from different viewpoints and thus have an overall improvement for the students and the teachers.

1. Students Exit Survey

As learners, students play a crucial and active role in education. They help enhance the efficiency of course structure, provide insights into the levels of student satisfaction, and act as a means whereby students can share their experiences in a transparent manner. The feedback was collected from the students in the following areas:

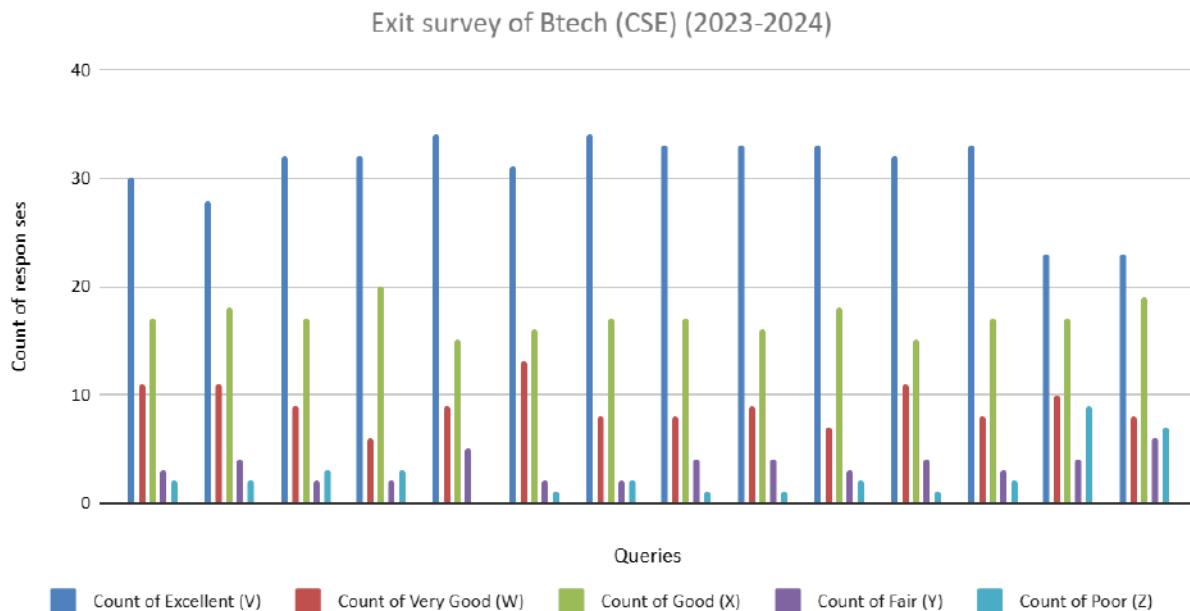
Graduate Exit Survey

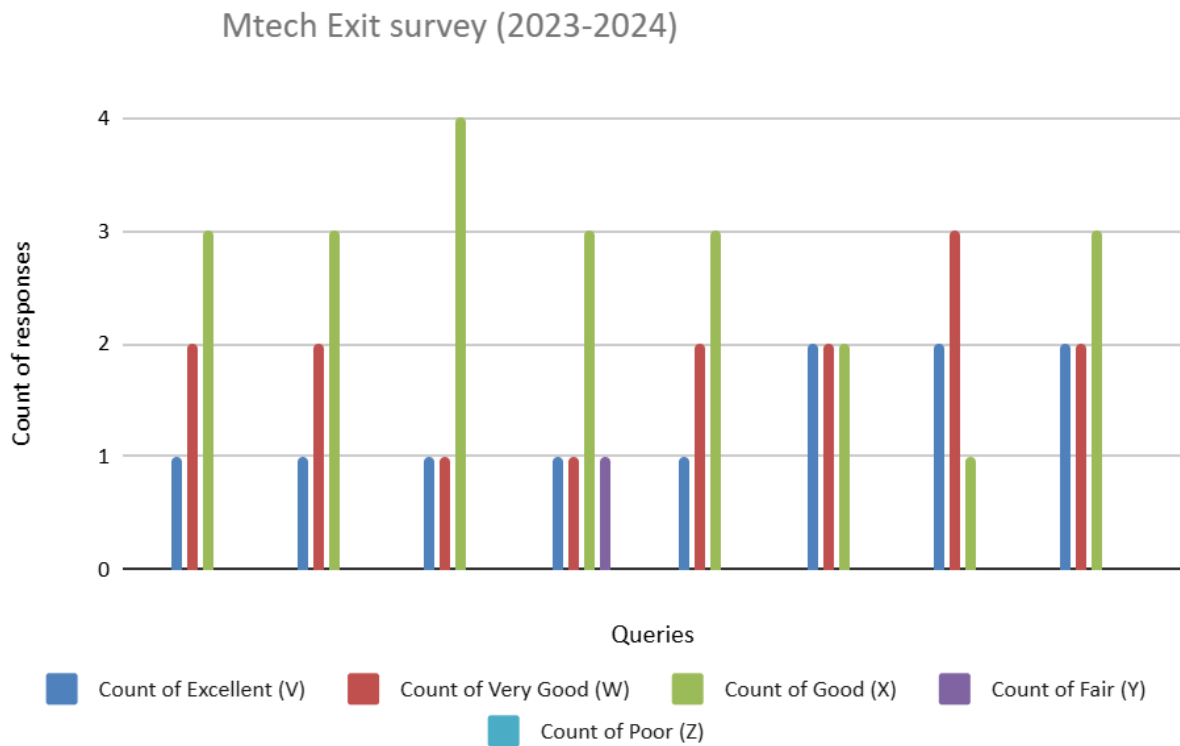
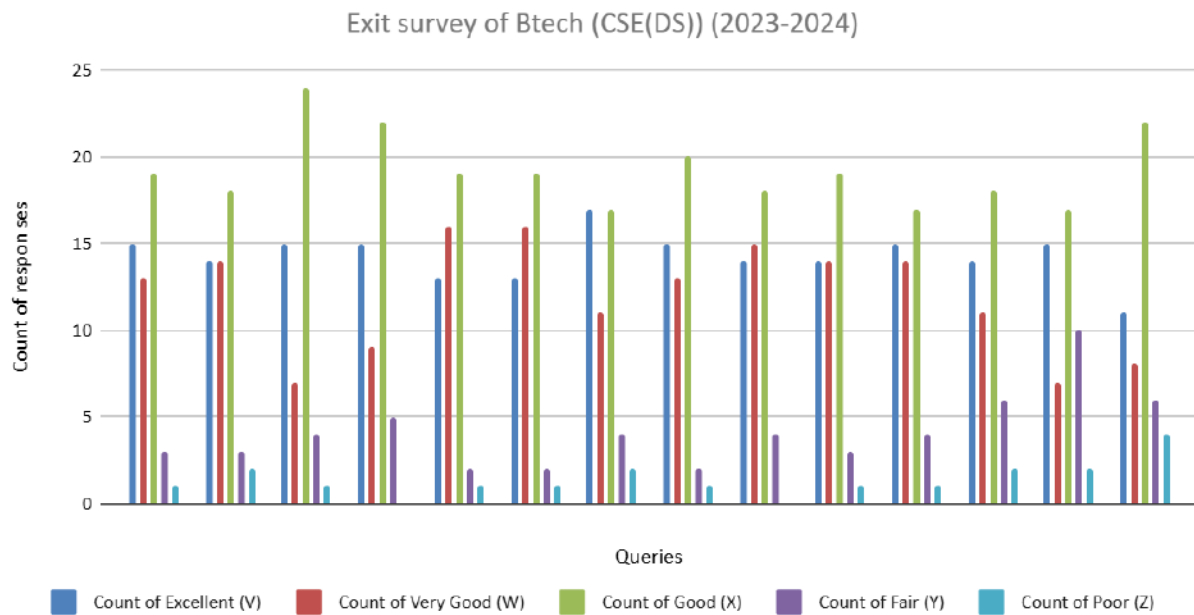
1. The curriculum helps in your level of knowledge in finding solutions to engineering problems
2. The curriculum enhances your ability to analyze and investigate complex problems and to design solution
3. The curriculum develops your skill to use modern tools and techniques in engineering activities
4. The curriculum strengthen your ability to find engineering solutions for sustainable development considering the impact on society
5. The curriculum promotes the level of ethical attitude and responsibilities in engineering practices.
6. The curriculum provides proficiency at teamwork.
7. The curriculum develops your communication with the engineering community and society.
8. The curriculum enhances your level of knowledge in principles of engineering and management to manage projects
9. The curriculum aids your ability to engage in life-long learning especially in the context of technological change
10. The curriculum strengthens your ability to design, develop and analyze systems for computational problems.
11. The curriculum helps your capability of using logical reasoning and heuristic techniques for developing algorithms
12. The curriculum strengthen your ability to take up challenges in system programming and web-based arena
13. The curriculum has relevance in real life situations and reflects current trends and applications in the respective disciplines.

14. The curriculum offers sufficient electives and provision value added courses.

Post Graduate Exit Survey

1. Ability to independently carry our research / investigation and development work to solve practical problems
2. Ability to write and present a substantial technical report/document
3. Degree of mastery over the area as per the specialization of the program
4. Ability to design and develop software systems adapting to evolutionary changes in areas related to modern data management, high performance architectures, web services and intelligent systems
5. Competence/ Inspiration to overcome challenges with innovative solutions through collaboration as well as emanate professionalism and indulge in lifelong learning
6. Motivation to practice professional ethics and intellectual integrity to contribute to society and strive for sustainable development
7. Curriculum has relevance in real life situations and reflects current trends and applications in the respective disciplines
8. The curriculum offers sufficient electives / value added courses.



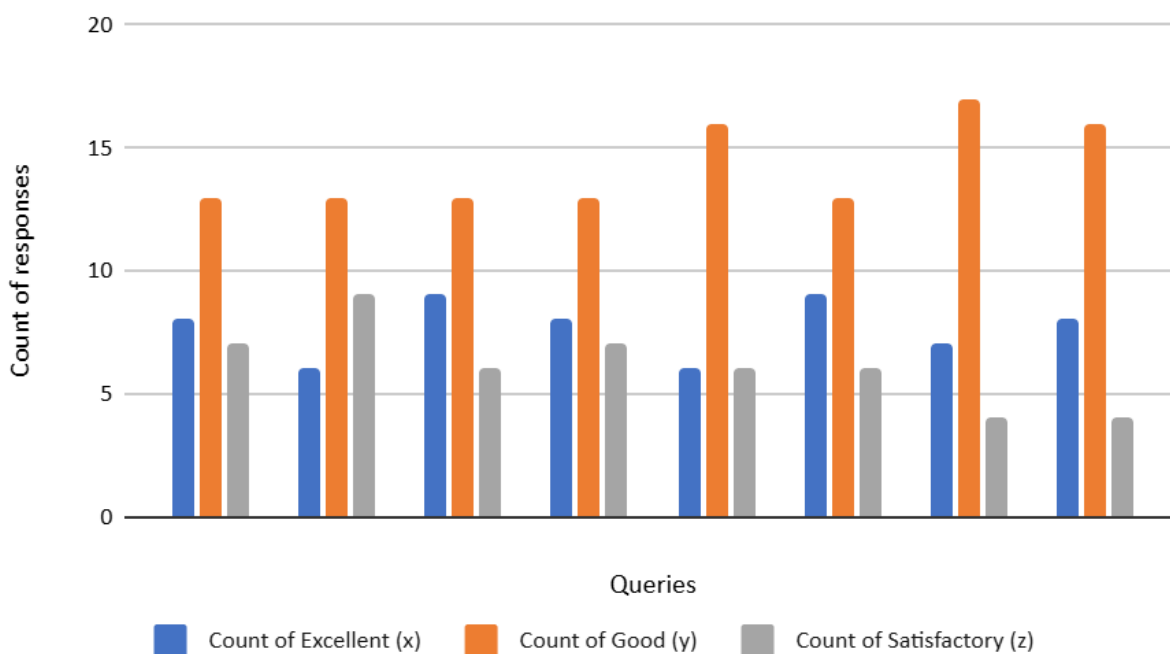


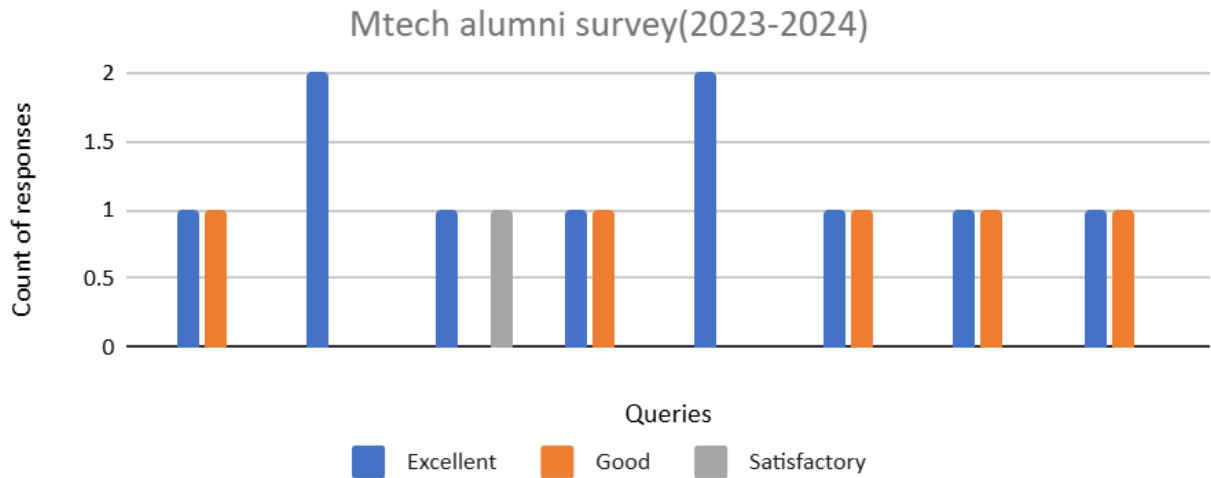
2. Alumni Survey

Alumni's were asked about their satisfaction regarding their skills to solve real world problems, the ability to acquire knowledge of modern tools from the curriculum and the ability to prepare well formed documents. The feedback was collected from the students in the following areas:

1. Analyze problems and design effective solutions individually and in teams
2. Observe real world situations and identify complex engineering problems which can be problems which can be solved by applying the knowledge acquired
3. Equip you with adequate knowledge of modern tools and inculcate learning attitude
4. Interpret social needs and manage such projects providing ethical and sustainable solutions
5. Effectively communicate complex engineering activities through documents as well as orally
6. Progressive learning and skills for a successful career
7. Experimental Learning activities(Internships /Field visits /Projects /Seminars /Assignments and Others) appropriateness of employment
8. The content of the program helps to develop your skills to work in a team and in multidisciplinary environment

BTECH ALUMNI SURVEY 2023-2024

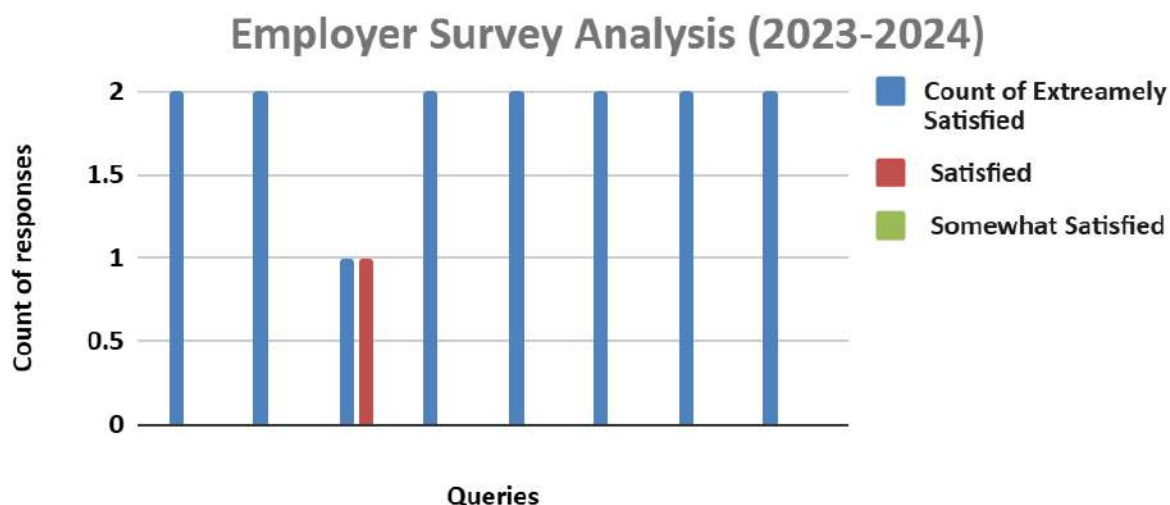




3. Employer Survey

This survey helped us to evaluate our students with respect to their ability to derive solutions individually and in team, quest to keep themselves updated, fundamental knowledge of mathematics and science, good communication skills. The feedback was collected from the students in the following areas:

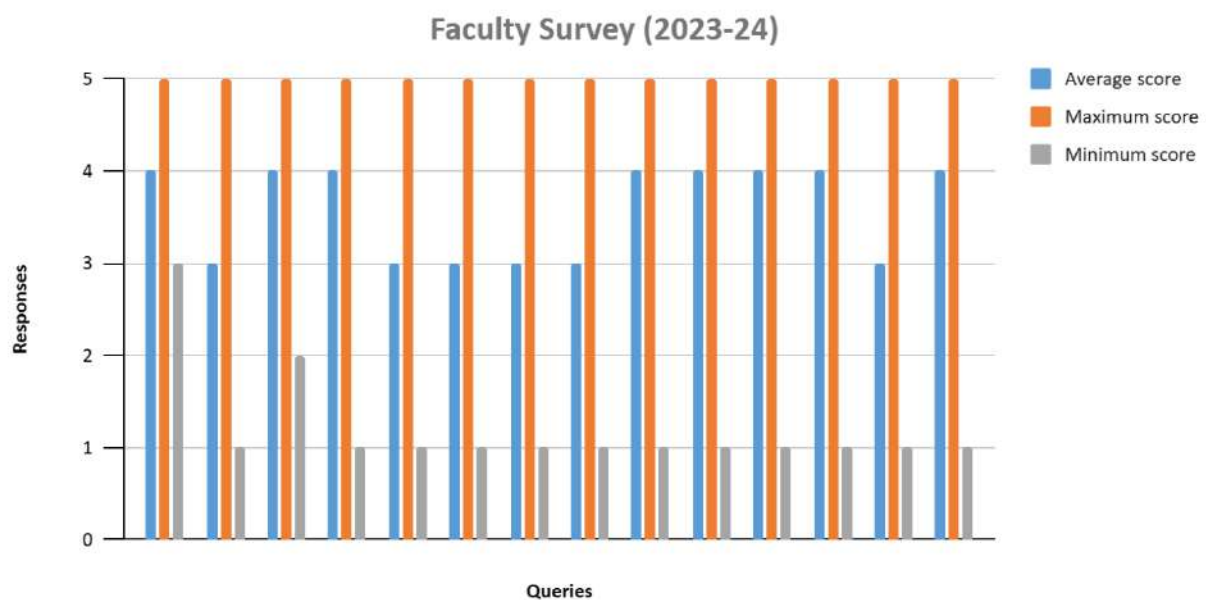
1. Dexterity to analyze and develop solutions individually and in teams
2. Inclination to keep oneself updated by learning new tools and acquiring additional skills, appreciating the value of lifelong learning
3. Fundamental knowledge in mathematics and science which help design sustainable solutions
4. Ability to derive solutions while retaining professional and ethical responsibilities through proper research
5. Proficiency to communicate effectively to the engineering community as well as society
6. Capability to manage complex problems and derive solutions effectively
7. The curriculum design is effective in developing innovative thinking
8. The curriculum helps the graduates in acquiring employable and entrepreneurship skills



4. Faculty Survey

Teachers are the ones who motivate the students to do better in every domain and help them achieve life goals. Suggestions from the teachers are also very important in designing the curriculum and improving the overall teaching learning process. As a part of this, we collect the feedbacks from different staffs handling various subjects. The feedback was collected from the students in the following areas:

1. How would you rate the content of the course in enriching technical knowledge and solving various engineering problems?
2. How would you recommend this course in familiarizing students with modern engineering tools?
3. How would you rate the content of the course in enriching the technical knowledge in computer science domain and solving various engineering problems?
4. Support for design, development, implementation and analysis of algorithms and systems for solving computational problems.
5. Support to exert problem solving capabilities using logical reasoning, heuristics and mathematical principles.
6. How well the course content creates awareness in professional ethics and emphasis the sustainable development of the society?
7. How well the course content provides proficiency at teamwork to assure sufficient managerial skills?
8. How would you recommend the course in developing effective communication and documentation skills?
9. How well the course equips students in lifelong learning in the context of technological development?
10. Opinion about Curriculum structure
 - Course objectives were clear
 - Course content was organized and well planned
 - Availability of e-learning resources/reference books
 - Scope of experiment-based learning for the course
 - Provides essential life skills or employability





**MAR ATHANASIOUS COLLEGE OF ENGINEERING,
KOTHAMANGALAM
DEPARTMENT OF COMPUTER APPLICATIONS
FEEDBACK ANALYSIS 2022-2023**

1. Students Feedback /Exit survey analysis 2023-2024

The feedback targets following different content for different stakeholders. For students, it addressed curriculum and its learning related issues in terms of quality, competence, skills and professionalism. This feedback also considers other issues like delivery of curriculum by teachers. This feedback was collected from students on the following areas.

Q1. The curriculum helps in your level of knowledge in finding solutions to computer applications problems

Q2. The curriculum enhances your ability to analyze and investigate complex problems and to design solutions

Q3. The curriculum develops your skill to use modern tools and techniques in computer applications activities

Q4. The curriculum strengthens your ability to find computer applications solutions for sustainable development considering the impact on society and environment

Q5. The curriculum promotes the level of ethical attitude and responsibilities in computer applications practices

Q6. The curriculum provides proficiency at teamwork.

Q7. The curriculum develops your communication with the computer applications community and society

Q8. The curriculum enhances your level of knowledge in principles of computer application and management to manage projects.

Q9. The curriculum enhances your level of knowhow to identify and understand computer applications problems.

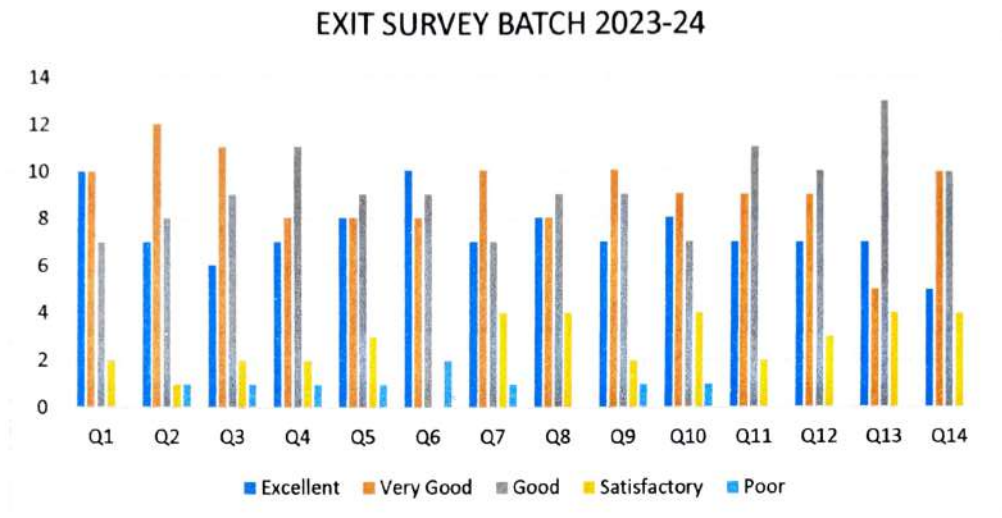
Q10. The curriculum strengthens your ability to optimize computer applications solutions.

Q11. The curriculum stimulates your out of the box thinking and continuous development of attitude towards computer applications problems

Q12. The adequacy of your course curriculum in addressing social issues

Q 13. Curriculum has relevance in real life situations and reflects current trends and applications in the respective disciplines.

Q14. The curriculum offers sufficient electives / value added courses.



2. Alumni Feedback analysis 2023-2024

The feedback targets following different content for different stakeholders. For alumni, it aimed for responses on adequateness of courses curriculum, sufficiency of syllabus context of current professional standards and curriculum design in context of development of self directed learning and problem solving approach. This feedback was collected from alumni on the following areas.

Q1 .Analyse problems and design effective solutions individually and in teams.

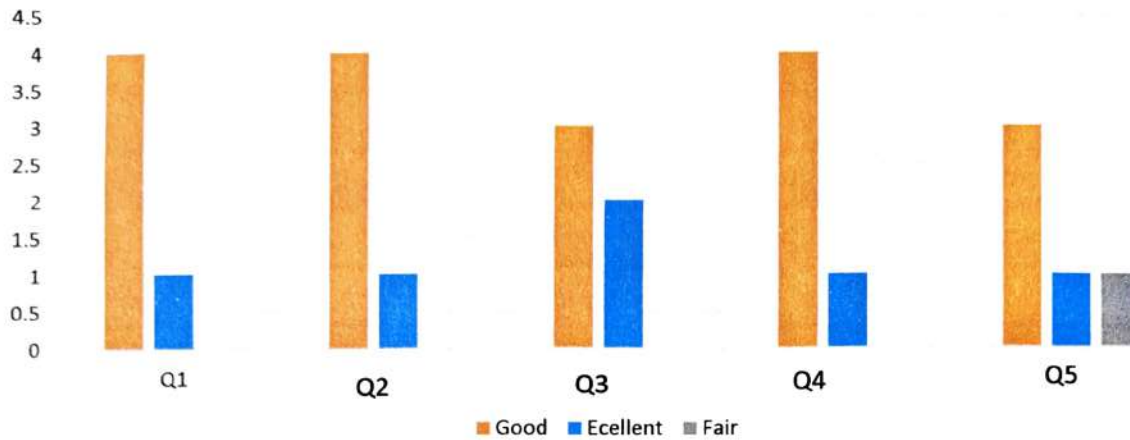
Q2. Observe real world situations and identify complex engineering.

Q3.Equip you with adequate knowledge of modern tools and inculcate a learning attitude.

Q4.Interpret social needs and manage such projects providing ethical and sustainable solutions

Q5. Effectively communicate complex engineering activities through documents as well as orally

Alumni Survey 2023-2024



3. Employer Survey analysis 2023-2024

Q1 Dexterity to analyse and develop solutions individually and in teams.

Q2 Inclination to keep oneself updated by learning new tools and acquiring additional skills, appreciating the value of life long learning

Q3 Fundamental knowledge in mathematics and science which help design sustainable solutions

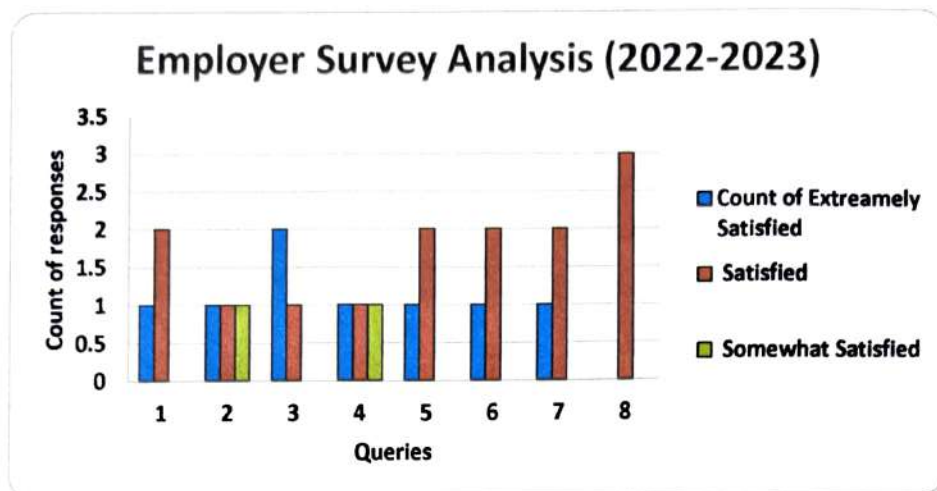
Q4 Ability to derive solutions while retaining professional and ethical responsibilities through proper research.

Q5 Proficiency to communicate effectively to the engineering community as well as society

Q6 Capability to manage complex problems and derive solutions effectively

Q7 The curriculum design is effective in developing innovative thinking

Q8 The curriculum helps the graduates in acquiring employable and entrepreneurship skills



4. Faculty Survey analysis 2023-2024

Q1 How would you rate the content of the course in enriching technical knowledge and solving various engineering problems?

Q2 How would you recommend this course in familiarizing students with modern engineering tools?

Q3 How would you rate the content of the course in enriching the technical knowledge in computer science domain and solving various engineering problems?

Support for design, development, implementation and analysis of algorithms and systems for solving computational problems.

Q4 Support to exert problem solving capabilities using logical reasoning, heuristics and mathematical principles.

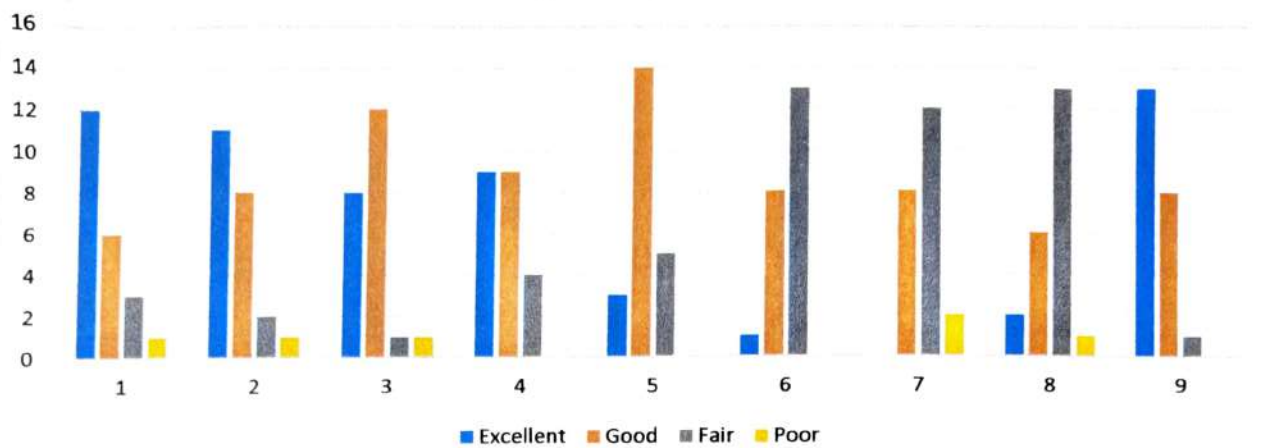
Q5 How well the course content creates awareness in professional ethics and emphasis the sustainable development of the society?

Q6 How well the course content provides proficiency at team work to assure sufficient managerial skills?

Q7 How would you recommend the course in developing effective communication and documentation skills ?

Q8 How well the course equips students in life long learning in the context of technological development ?

Faculty Survey 2023-2024



BSSh
 HoD (MCA)

